



david.lewis

David Lewis Organisation Structures

February 2025

Our Executive Team



John Heritage
Chief Executive
@DavidLewisCEO



Neil Edwards
Director of
Finance & Estates

Responsible for:

- Finance
- Estates
- Facilities
- Company Secretary



Simon Messenger
Director of
Adult Residential
& Day Opportunities

Responsible for:

- Adult Residential Services and Day Opportunities



Victoria Entwistle
Director of Clinical Services,
Quality & Compliance

Responsible for:

- Clinical Services
- Safeguarding (Exec Lead) Health & Safety
- Quality



Sue Hunt
Director of People,
Culture & Systems

Responsible for:

- Recruitment
- Training
- Workplace Mentor scheme
- Human Resources
- IT/Systems
- Communications



Angie Fisher
Director of Education

Responsible for:

- School 11-16
- College 16+

Our Trustees



Tricia Kalloo
Chair



Paul McKeivitt
Trustee



Geoff Loughlin
Vice-Chair



Alistair Hollows
Trustee



Elaine Cartwright
Trustee



Carole Spencer
Trustee



Professor Vicky Halliwell
Trustee



Lisa Ellis
Trustee



Paul Brearley
Trustee



Paul Walker
Trustee



Christine Green
Trustee

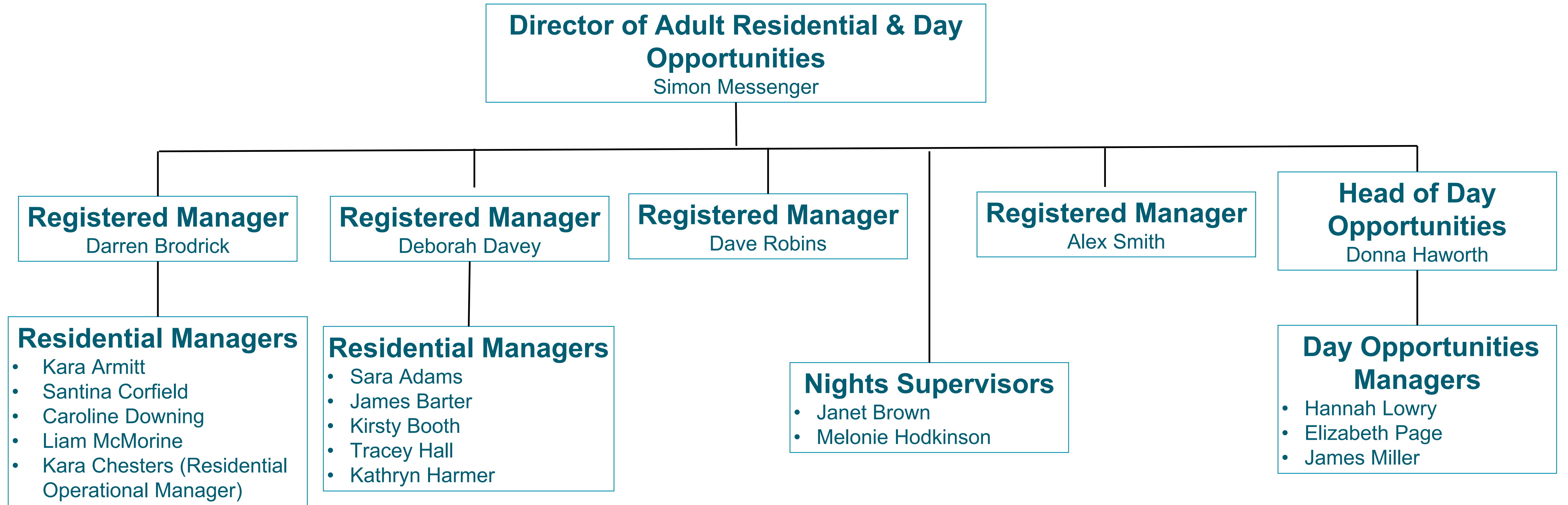
Committee Structure

	Risk, Safety & Governance Committee	Resources Committee	School Governors	College Governors
Trustees	Geoff Loughlin (Chair) Tricia Kalloo Lisa Ellis Paul Walker	Alistair Hollows (Chair) Carole Spencer Paul McKeivitt Christine Green	Dr Victoria Halliwell (Chair) Paul Brearley	Carole Spencer (Chair) Geoff Loughlin
Executives	All Executive Team	Neil Edwards Sue Hunt John Heritage	Angie Fisher John Heritage	Angie Fisher John Heritage



Residential and Day Opportunities

Adult Residential & Day Opportunities





Education

david • lewis

Education

Director of Education
Angie Fisher

School

College

Administrator/Clerk to the Governing Body (School)
Tracy Donaldson

Head of School
Kate Tierney

Admissions Manager
Gilly Godwin

**Deputy Head of Education
Head of College**
Zoe Wright

Administrator/Clerk to the Governing Body (College)
Janet Ford

Teachers

Assistant Head
Lily Carney

Assistant Head
Hannah Lafferty

Teachers

Student Services Manager
Tina Hooson

Assistant Principal
Lorna McKenzie
Joanne Hall

Pathway Coordinator
Bernie Turnbull-Smith

Pathway Coordinator
Ashley Palmer

Student Services Manager
Charlotte Bennet

Learning Support Staff

Careers & Pathway Manager
Kirsty Stanley

Learning Support Staff

College Administrator
Janette Maunder

Pathway Coordinator
Amanda Bates
Aneela Yousaf
Amanda Keelan
Carrie Archer (Temp)



Clinical, Quality and Compliance

Clinical Services, Quality & Compliance

Director of Clinical Services, Quality & Compliance
Victoria Entwistle





People, Culture & Systems

People Culture & Systems

Director of People, Culture & Systems
Sue Hunt

Learning & Development Manager
Simon Priest

Training & Development Team
Dominic Green
Nick Bonnington
Zowie Jupp

HR & Training Assistant
April Oakes

Recruitment Lead
James Entwistle

Communications Manager
Eleanor Turpin

HR Business Partners
Jane Halliday
Catherine Simpson

HR Advisor
Alex Barlow
Ben Ingram

HR Assistants
Laura Luckman
Victoria Moran
Kerys Whitely

Information & Applications Manager
Martin Day

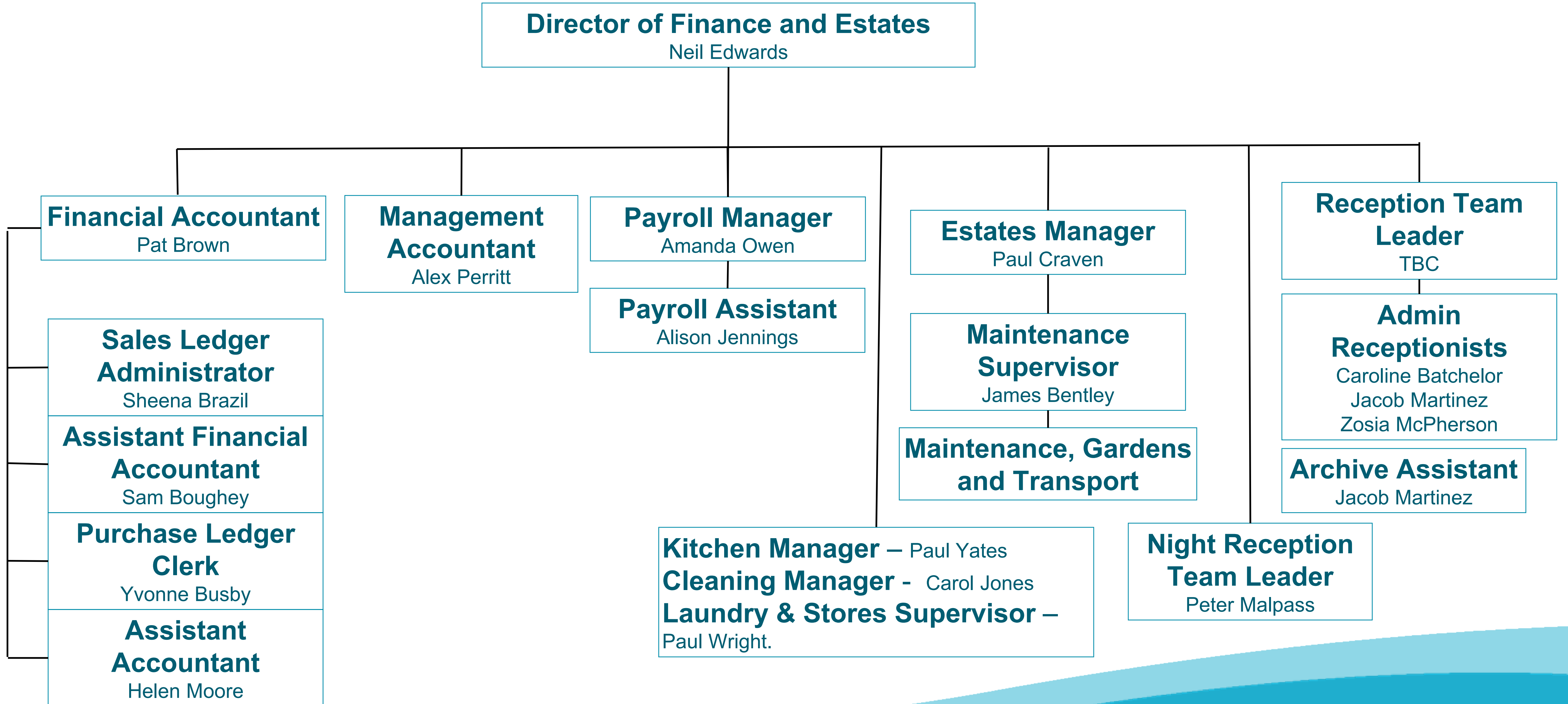
IT Systems Engineers
Jamie Bowler
Tim Stuttard

Workplace Mentors
Janet Thorpe
Abigail Walker



Finance and Estates

Finance and Estates





Chief Execs Office

Chief Executives Office

