



david.lewis

David Lewis
Organisation
Structures
September 2025

Our Executive Team

david•lewis



John Heritage
Chief Executive
@DavidLewisCEO



Neil Edwards
Director of
Finance & Estates

Responsible for:

- Finance
- Estates
- Facilities
- Company Secretary



Simon Messenger
Director of
Adult Residential
& Day Opportunities

Responsible for:

- Adult Residential Services and Day Opportunities



Victoria Entwistle
Director of Clinical Services,
Quality & Compliance

Responsible for:

- Clinical Services
- Safeguarding (Exec Lead) Health & Safety
- Quality



Sue Hunt
Director of People,
Culture & Systems

Responsible for:

- Recruitment
- Training
- Workplace Mentor scheme
- Human Resources
- IT/Systems
- Communications



Angie Fisher
Director of Education

Responsible for:

- School 11-16
- College 16+

david•lewis

Our Trustees



Tricia Kalloo
Chair



Paul McKevitt
Trustee



Geoff Loughlin
Vice-Chair



Elaine Cartwright
Trustee



Carole Spencer
Trustee



Professor Vicky Halliwell
Trustee



Lisa Ellis
Trustee



Paul Brearley
Trustee



Paul Walker
Trustee



Christine Green
Trustee

Committee Structure

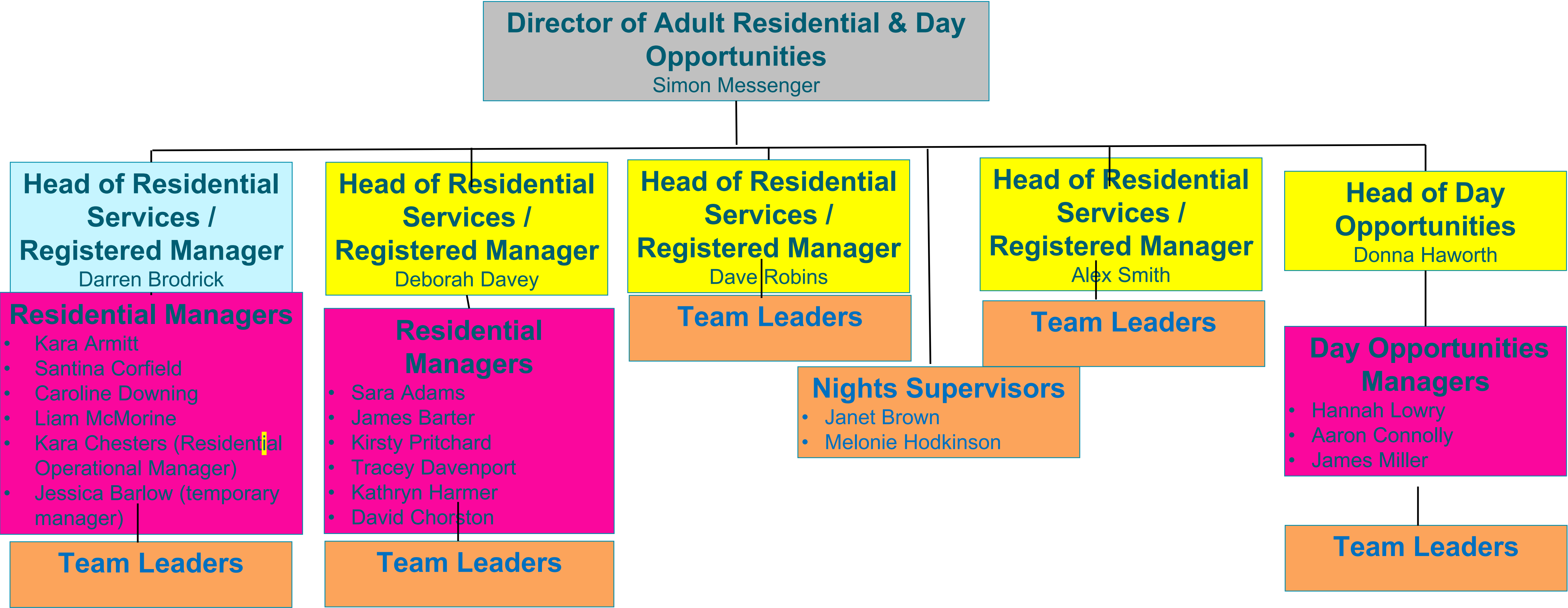
	Quality, Risk & Governance Committee	Resources Committee	School Governors	College Governors
Trustees	Geoff Loughlin (Chair) Lisa Ellis Paul Walker	(Chair) Carole Spencer Paul McKevitt Christine Green	Dr Victoria Halliwell (Chair) Paul Brearley Elaine Cartwright	Carole Spencer (Chair) Geoff Loughlin Christine Green
Executives	All Executive Team	Neil Edwards Sue Hunt John Heritage	Angie Fisher John Heritage (Governor)	Angie Fisher John Heritage (Governor)



Residential and Day Opportunities

david•lewis

Adult Residential & Day Opportunities

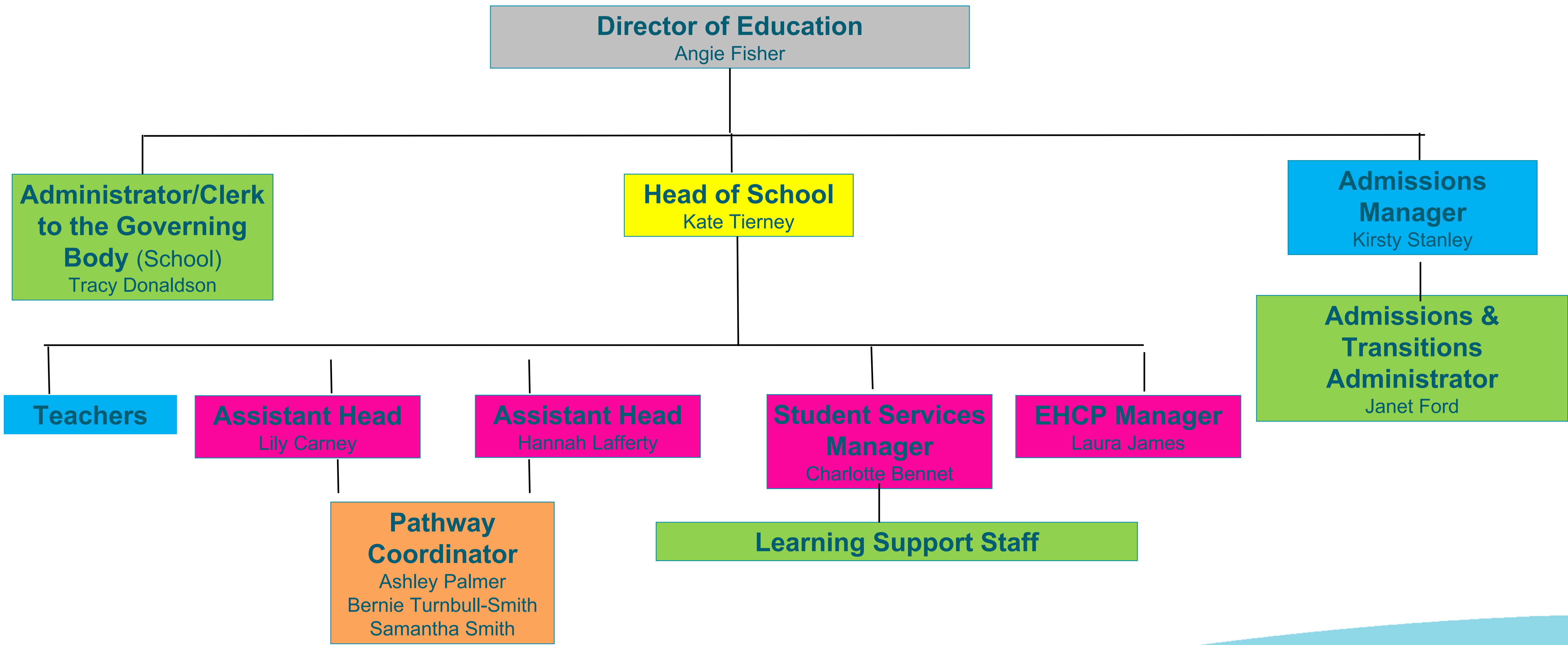




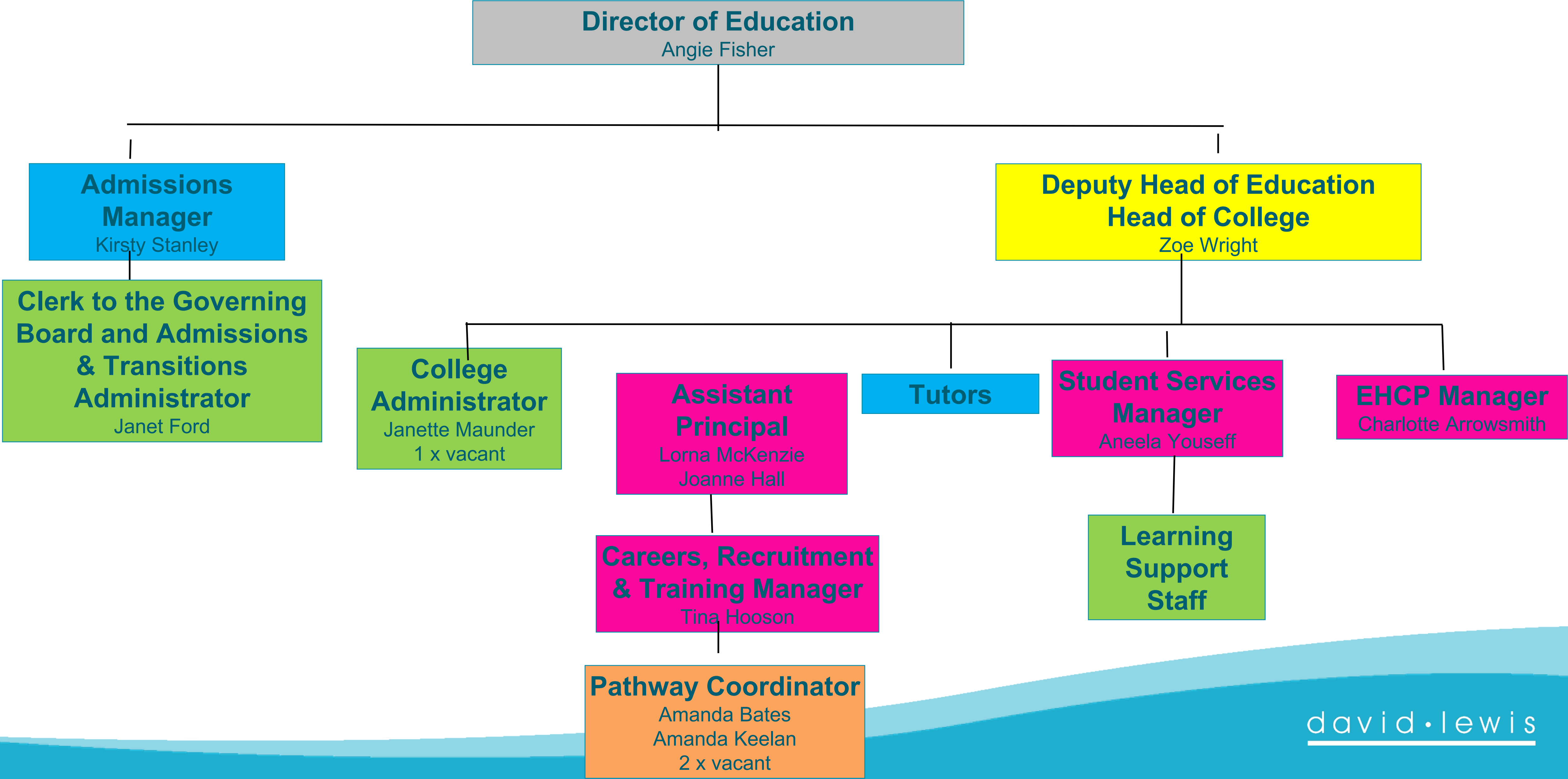
Education

david.lewis

Education - School



Education - College

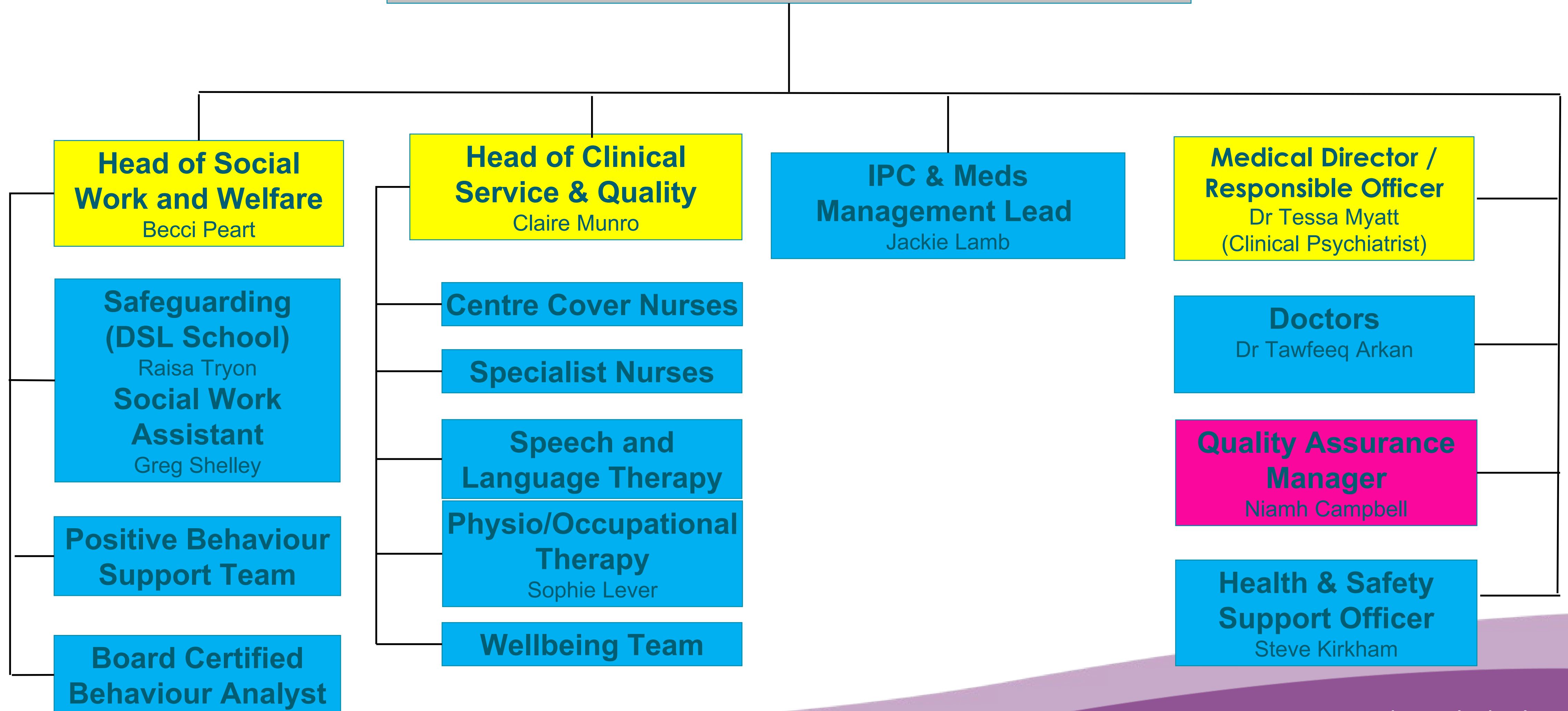




Clinical, Quality and Compliance

Clinical Services, Quality & Compliance

Director of Clinical Services, Quality & Compliance
Victoria Entwistle





People, Culture & Systems

david.lewis

People Culture & Systems

Director of People, Culture & Systems
Sue Hunt

Head of Learning & Development
Simon Priest

Training & Development Team
Dominic Green
Nick Bonnington
Zowie Jupp

HR & Training Assistant
April Oakes

Head of Recruitment
James Entwistle

Recruitment Assistant
Jo Walters

HR Business Partners
Jane Halliday
Catherine Simpson

HR Advisor
Ben Ingram
David Marsh

HR Assistants
Victoria Moran
Kerys Whitely

Workplace Mentors
Janet Thorpe
Abigail Walker

Head of IT Systems
Martin Day

IT Systems Engineers
Jamie Bowler
Tim Stuttard

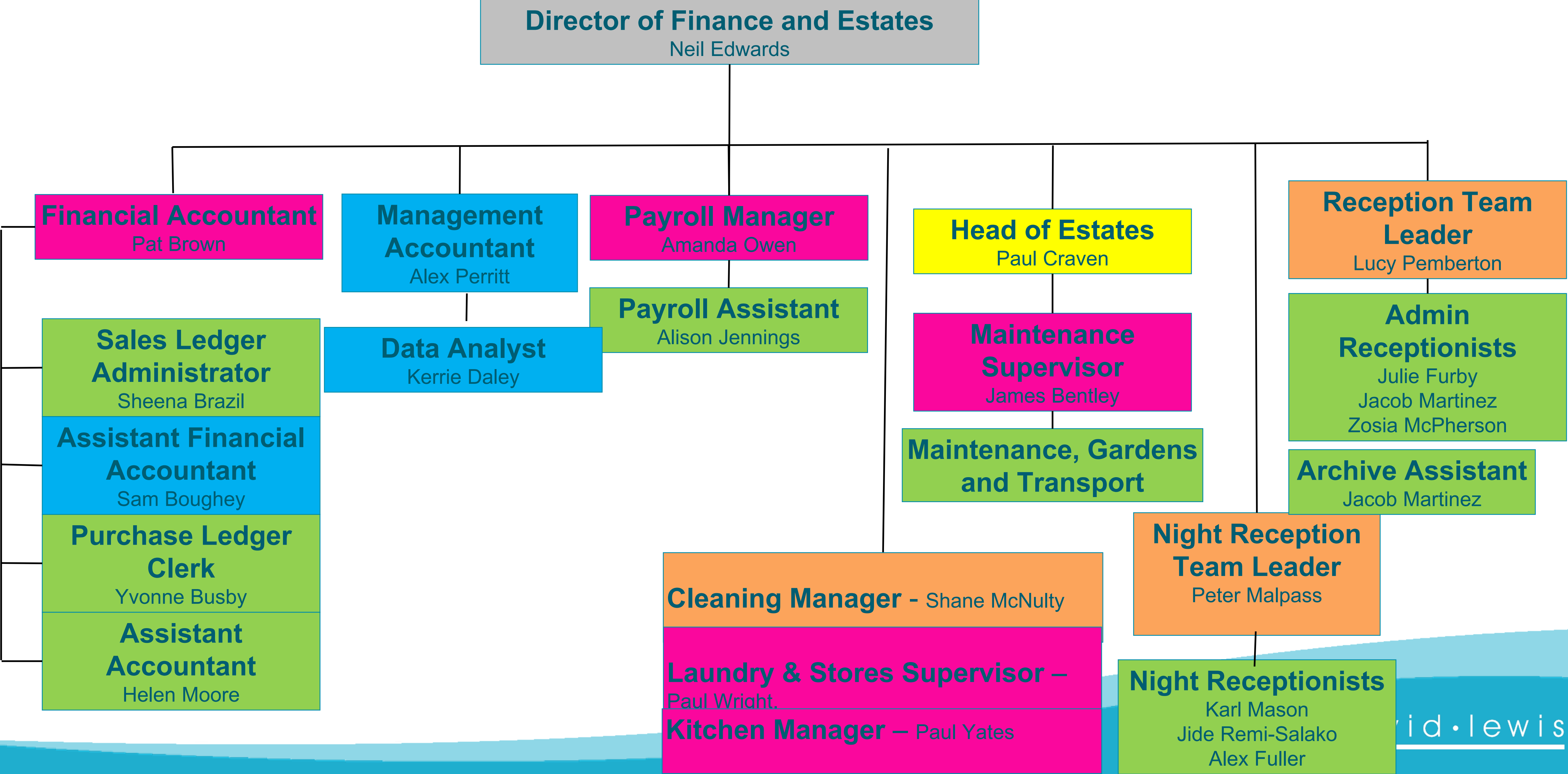
Project Coordinator
Alex Barlow



Finance and Estates

david•lewis

Finance and Estates





Chief Execs Office

Chief Executives Office

